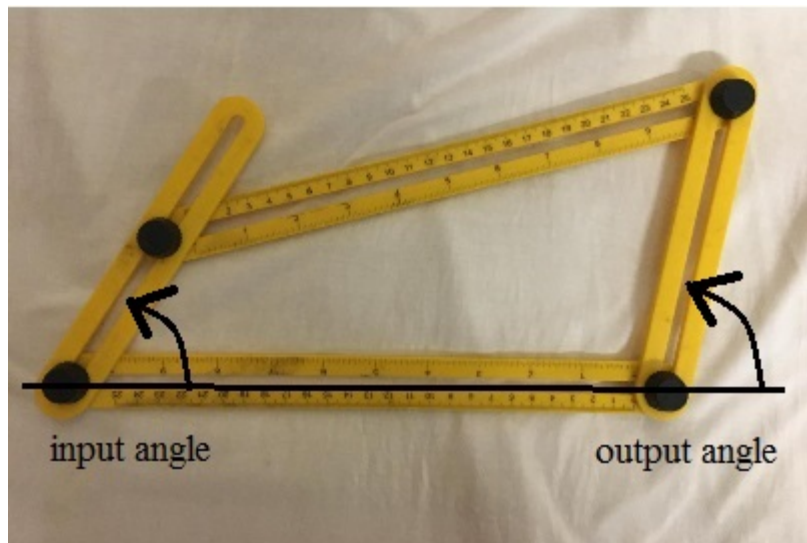
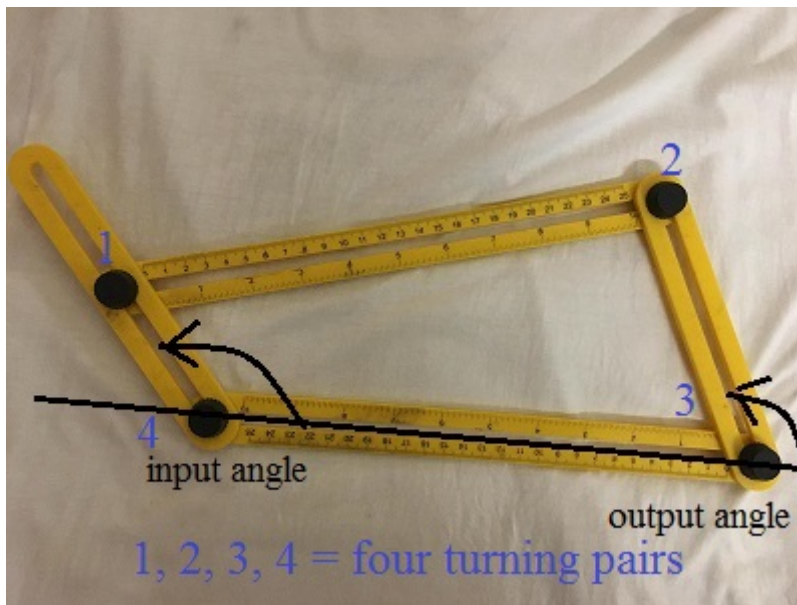


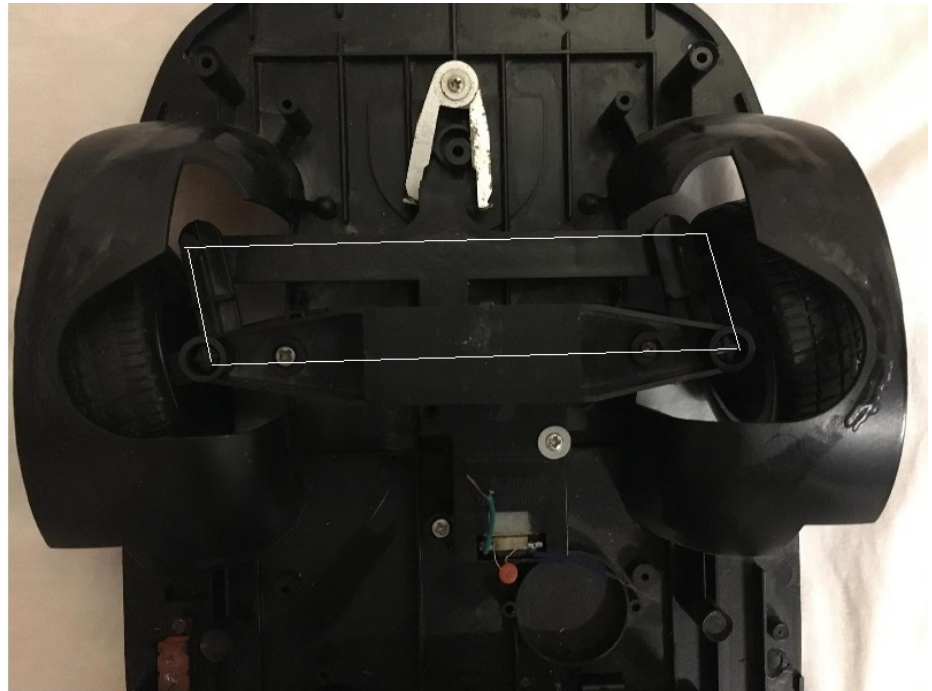
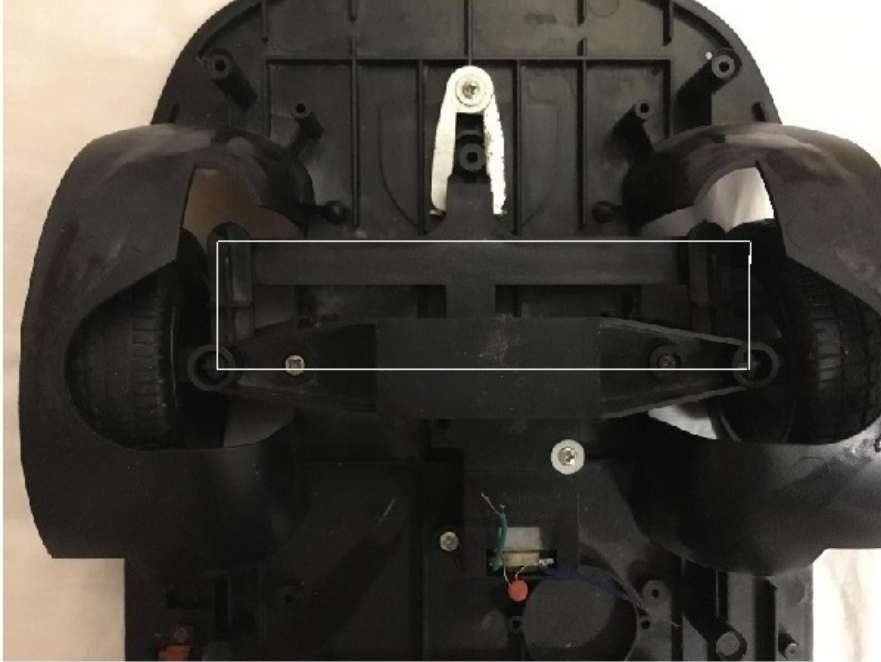
SIMPLEST MECHANISMS

Four – Bar Linkage Mechanism

1. Assembled from a set of 4 measuring scales & 4 bolts with nuts that enable rotation

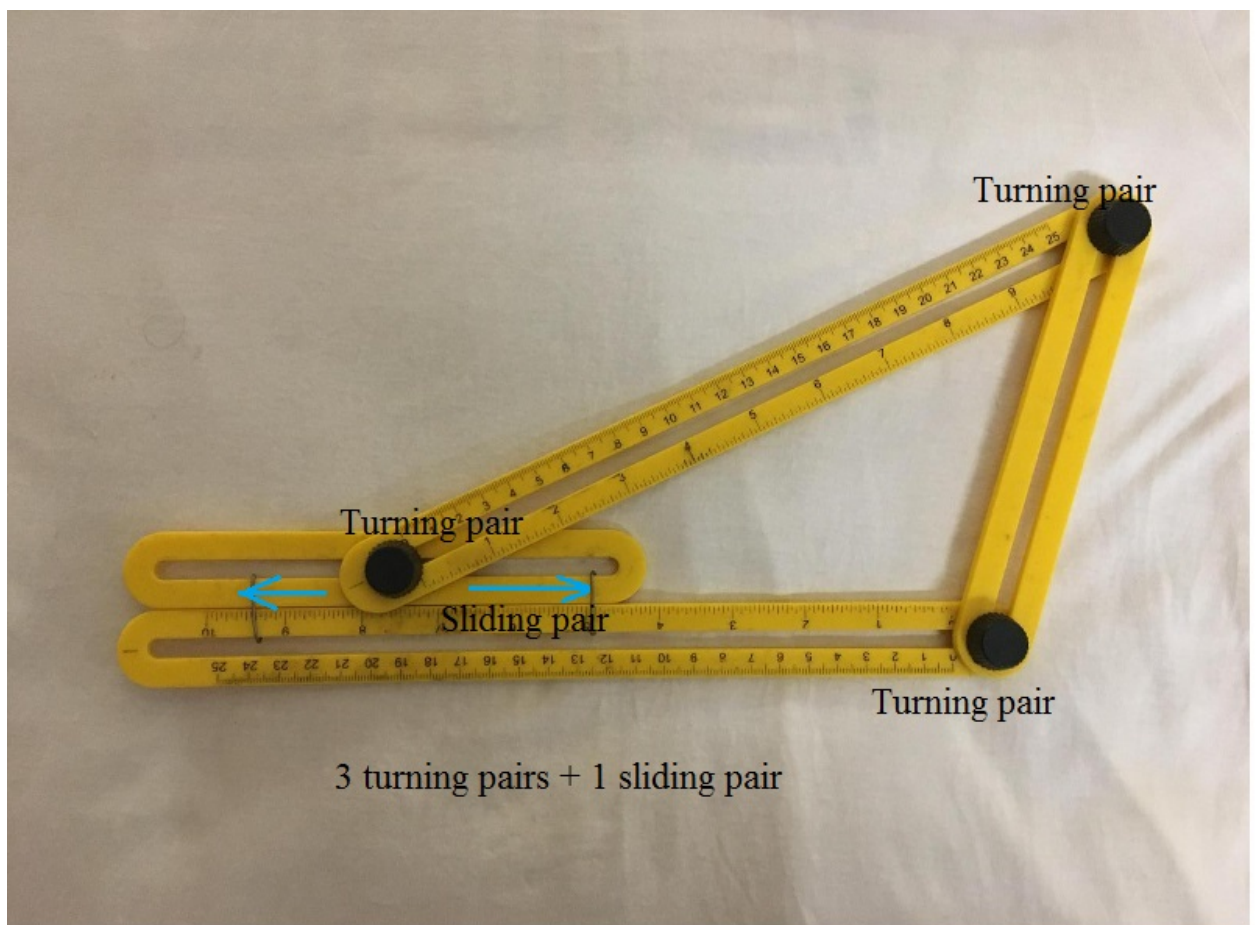


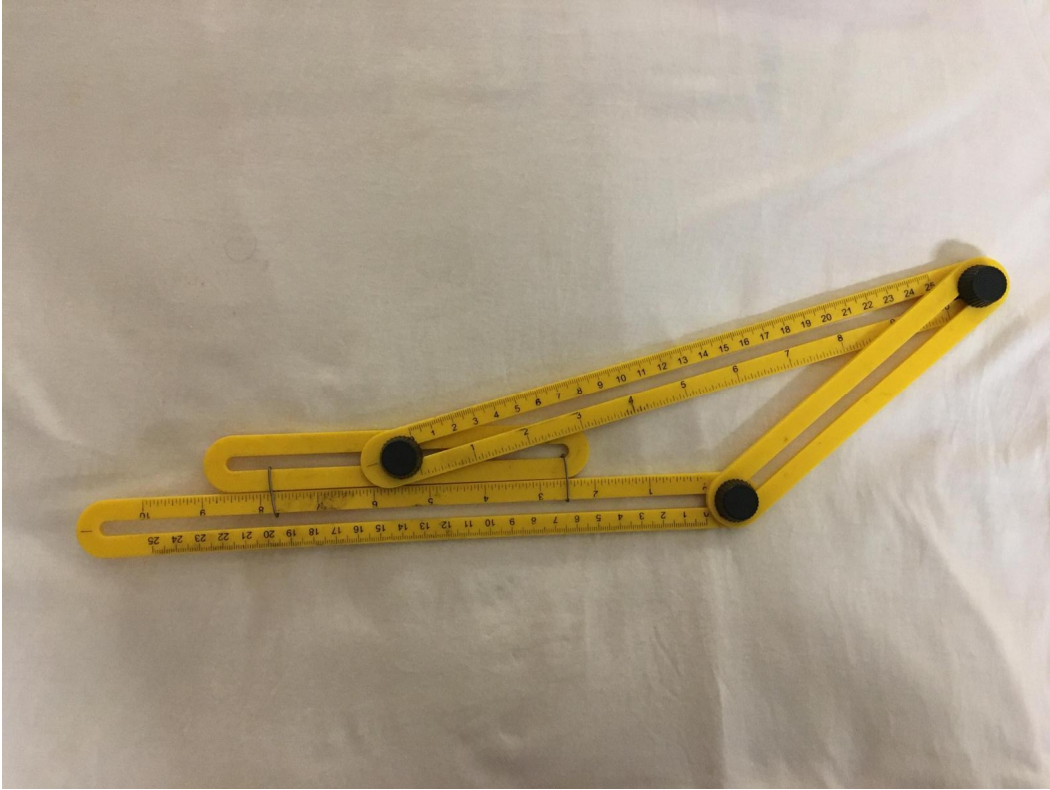
2. Simple Steering of a toy model car



Slider-Crank Mechanism

1. Assembled from same set of 4 scales, 3 bolts with nuts and 2 wires to constraint sliding of one bar over other.

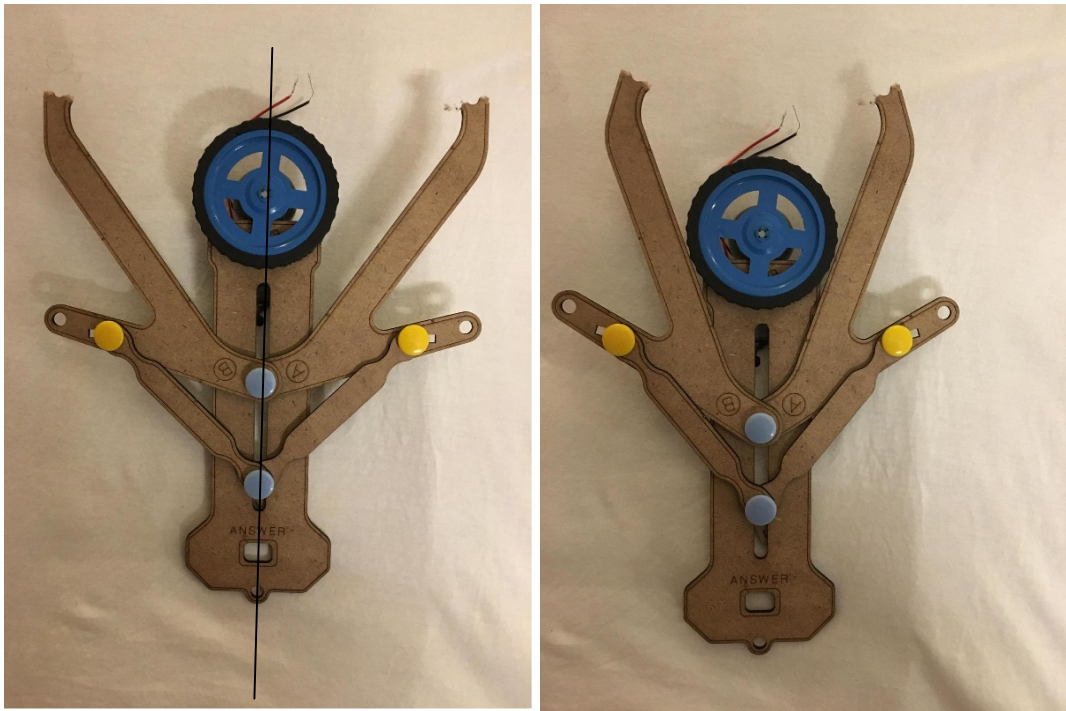




2. Display stand with lock-nuts



3. Simplest Braking Mechanism



Two Slider-Crank mechanisms (left & right work in synchronism)
Note: Upper blue button is turning pair only – it doesn't move up or down, Lower blue button is the 'piston'.